



GEORGEN HOMES INC.



Westwood

28 East Hillcrest Court • Colbert, WA
Fall Festival of Homes Price: \$289,900



Plese Realty, LLC
MIKE GRAHAM
509-993-4606

www.plese.com

The appliances for this home are supplied by

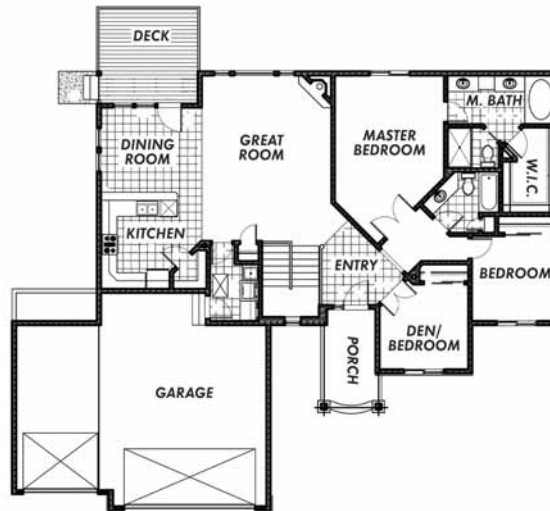


3 Bedrooms • 3 Bathrooms • 1767 Square Feet

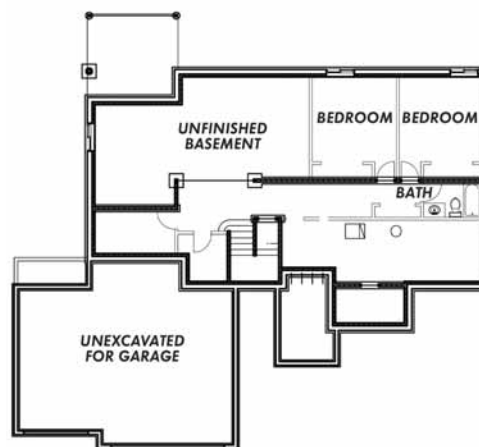
FEATURES

- Craftsman Style Entry and Grand Staircase
- Large Master Bath With Soaking Tub and Walk-In Closet
- Nice Kitchen with Walk-In Pantry
- 10' Ceilings

DIRECTIONS: US Highway 395 north to Monroe Road, turn right to North Division Street, turn right to East Hillcrest Court, turn left.



• MAIN FLOOR PLAN •



• LOWER FLOOR PLAN •

About the Builder

BRUCE GEORGEN
(P) 509-276-7987 • (F) 509-276-8055
bgeorgen@hotmail.com
www.georgenhomes.com



www.spokanefestivalofhomes.com