



# LAWRENCE CUSTOM HOMES



## Parkview

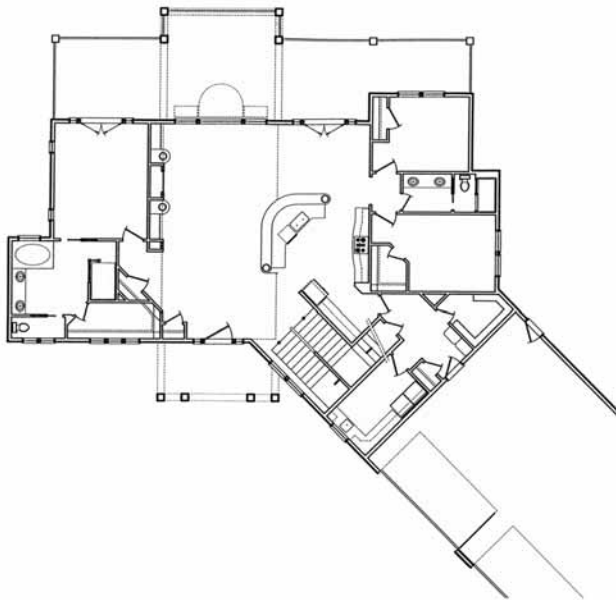
9609 West Parkview Lane • Nine Mile Falls, WA  
Fall Festival of Homes Price: \$749,000

Plese Realty, LLC  
**VIC PLESE**  
509-217-7889  
  
www.plese.com



3 Bedrooms • 2.5 Bathrooms • 6100 Square Feet

• MAIN FLOOR PLAN •



### FEATURES

- Bonus Space Over Garage with Large Private Covered Deck
- Grand Entrance and 14.5' Ceilings in Great Room
- 4+ Garage Finished Including Custom Patina Floor
- Views of River Side State Park and Nine Mile Falls

**DIRECTIONS:** From Francis Avenue and Division Street, west on Francis Avenue which turns to Nine Mile Road, past Assembly Street, continue past mile marker 8. Gate, signs and water features on the right.

From downtown, north on Maple Street, left on Northwest Boulevard which turns to Assembly Street which turns to Nine Mile Road.

### About the Builder

**JASON LAWRENCE**  
(P) 509-994-2525 • (F) 509-327-7829  
roc1@omnicast.net



Presented by Spokane Home Builders Association

[www.spokanefestivalofhomes.com](http://www.spokanefestivalofhomes.com)