



# LAWRENCE CUSTOM HOMES



## Park Place

6021 North Bridget Street • Spokane, WA  
Fall Festival of Homes Price: \$479,900



Plese Realty, LLC  
**VIC PLESE**  
509-217-7889

[www.plese.com](http://www.plese.com)

3 Bedrooms • 2 Bathrooms • 4220 Square Feet

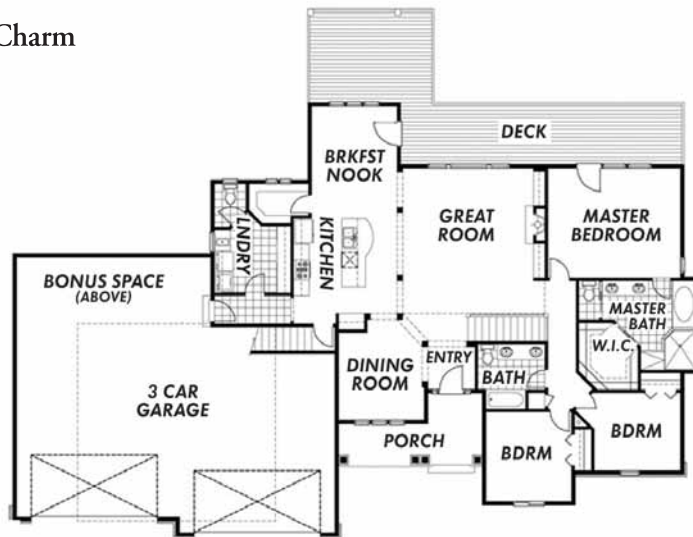
### FEATURES

- House Backs Riverside State Park
- High Cathedral Ceiling in Great Room and Granite Island in Kitchen
- French Doors in Master Suite opens to Stamped-Concrete Patio
- Extensive Woodworking gives extra Character & Charm

**DIRECTIONS:** West on Francis Avenue, which turns into Nine Mile Road, left on North Lyons Road just past Zip Trip, left on Hartley Street, right on Francis Avenue into Park Place. Francis Avenue turns into North Bridget Street after about three blocks.

### About the Builder

**JASON LAWRENCE**  
(P) 509-994-2525 • (F) 509-327-7829  
roc1@omnicast.net



• MAIN FLOOR PLAN •



[www.spokanefestivalofhomes.com](http://www.spokanefestivalofhomes.com)