

Eagle Ridge

6402 South Springview Street • Spokane, WA
Fall Festival of Homes Price: \$389,950

FALL FESTIVAL SOUTH HOST SITE

Windermere/Manito
JIM LISTER
509-216-2222

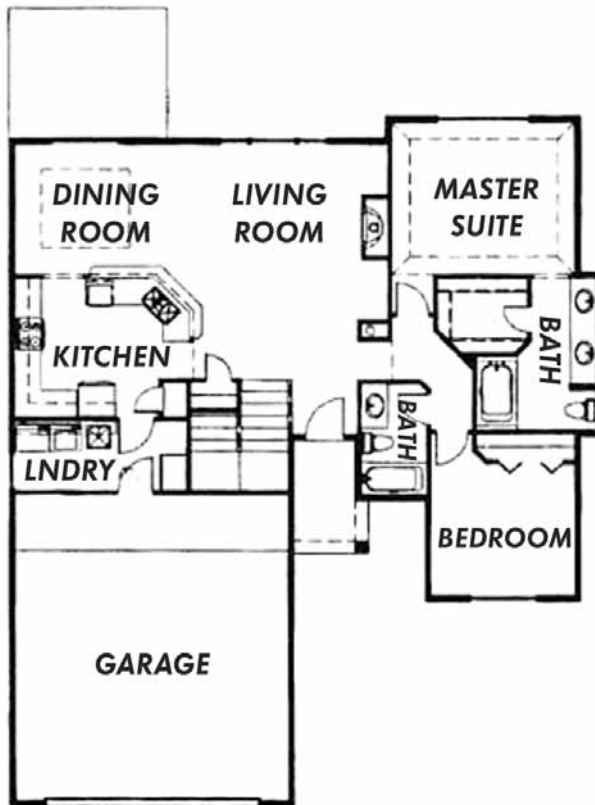
www.windermere.com

The appliances for this home are supplied by



5 Bedrooms • 3 Bathrooms • 3044 Square Feet

• MAIN FLOOR PLAN •



FEATURES

- Hardwood Floors in Great Room, Kitchen and Nook
- Finished Lower Level
- Daylight Walk-Out 9' Lower Level
- Home is Partially Furnished

DIRECTIONS: Take the I-90 exit to US Highway 195 south to Eagle Ridge Boulevard. Head west and go right on Parkridge Boulevard, take the 2nd right on South Springview Street, 2nd home on right.

About the Builder

GERRY MORSE & PHIL FOLYER
(P) 509-263-9521 • (F) 509-927-9739
GMorse4616@aol.com • philfolyer@msn.com
www.homesmw.com



www.spokanefestivalofhomes.com