



# LEXINGTON ESTATES, INC.



## Aspen Creek Estates

10728 East Pierce Lane • Spokane, WA  
 Fall Festival of Homes Price: \$1,097,000



Tomlinson Valley, Inc.  
**SHANE DELANEY**  
 509-879-2683

[www.tomlinsonspokane.com](http://www.tomlinsonspokane.com)

The appliances for this home are supplied by



3 Bedrooms • 3 Bathrooms • 4337 Finished Square Feet

### FEATURES

- Exclusive Gated Executive Acreage Living
- Award Winning Builder in 2007 Fall Festival of Homes
- Unique Flexible Living Spaces
- Expansive Entertaining Walk-Out Basement
- Optional 4<sup>th</sup> Bathroom
- Room to Expand in Bonus Room over Garage
- Home Completely Wired for all your Home Integration Needs
- Home is Partially Furnished

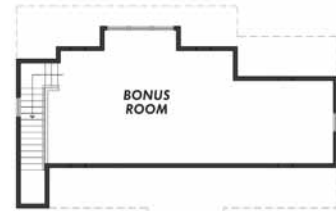
**DIRECTIONS:** South on Dishman Mica Road, right on Bowdish Road, left on Bates Road, left on East Pierce Lane.

### About the Builder

**TODD WEILAND & DAVE NERREN**  
 (P) 509-924-1519 • (F) 509-892-1208  
 todd@lexestates.com  
 www.lexestates.com



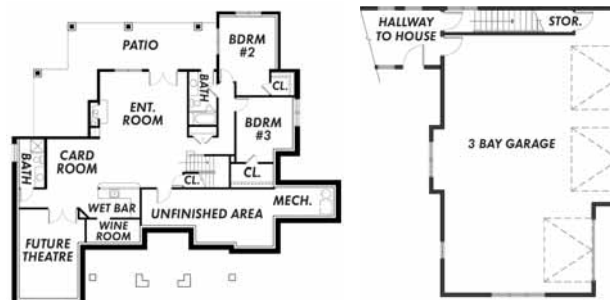
[www.spokanefestivalofhomes.com](http://www.spokanefestivalofhomes.com)



UPPER  
 FLOOR PLAN



MAIN  
 FLOOR PLAN



LOWER  
 FLOOR PLAN