



# JTS DEVELOPMENT



## Elk Ridge Heights

13324 East Bitterroot Lane • Spokane Valley, WA  
 Fall Festival of Homes Price: \$650,000



Windermere Valley, Inc.  
**JOE MANN**  
 509-951-8367

[www.windermere.com](http://www.windermere.com)

The appliances for this home are supplied by



4 Bedrooms • 4 Bathrooms • 6000 Square Feet

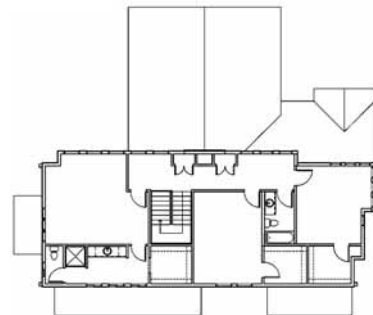
### FEATURES

- Tin Roof Interiors Staging/Decoration
- BOSE® Sound System on Main Floor
- 2 Master Suites
- Home Design by Sam Rodell, AIA
- Home is Furnished

**DIRECTIONS:** Pines Road south, bear left on State Highway 27, right to Elk Ridge Heights, home on corner of Copper River Lane and East Bitterroot Lane.

#### About the Builder

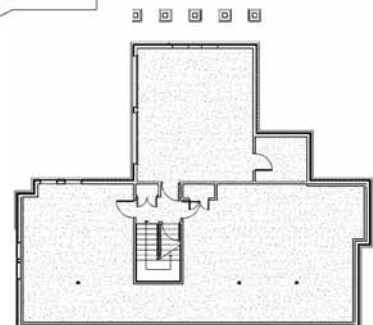
**JTS DEVELOPMENT**  
 (P) 509-939-7670 • (F) 408-354-9787  
[gstolp@comcast.net](mailto:gstolp@comcast.net)  
[www.elkridgeheights.com](http://www.elkridgeheights.com)



UPPER  
 FLOOR PLAN



MAIN  
 FLOOR PLAN



LOWER  
 FLOOR PLAN



[www.spokanefestivalofhomes.com](http://www.spokanefestivalofhomes.com)