

## Fraser Estates 2<sup>nd</sup> Addition

5118 North Stout Court • Spokane, WA  
 Fall Festival of Homes Price: \$274,950



Tomlinson Valley  
**JULIE BALCH**  
 509-710-7424

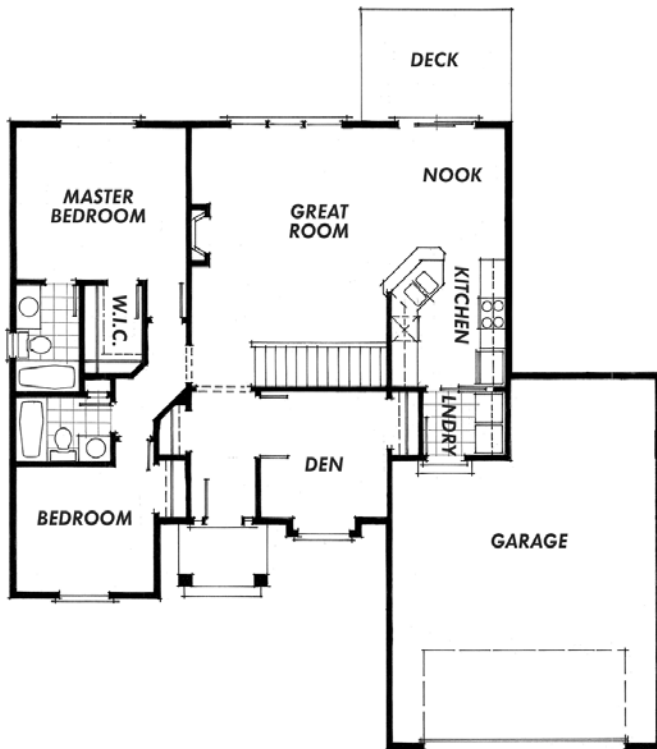
www.tomlinsonrealestategroup.com

The appliances for this home are supplied by



3 Bedrooms • 2 Bathrooms • 3001 Square Feet

• MAIN FLOOR PLAN •



### FEATURES

- Spacious Open Great Room Concept
- Near Centennial Trail
- Hardwood Floors, Stone Accents, and Tile
- Home is Partially Furnished

**DIRECTIONS:** I-90, north on Argonne Road, east on Wellesley Avenue, first left (north) into Fraser Estates.

### About the Builder

**JIM MAHAR**  
 (P) 509-879-3495 • (F) 509-891-8833  
 jimmahar@tb.com



www.spokanefestivalofhomes.com