



30 NORTH



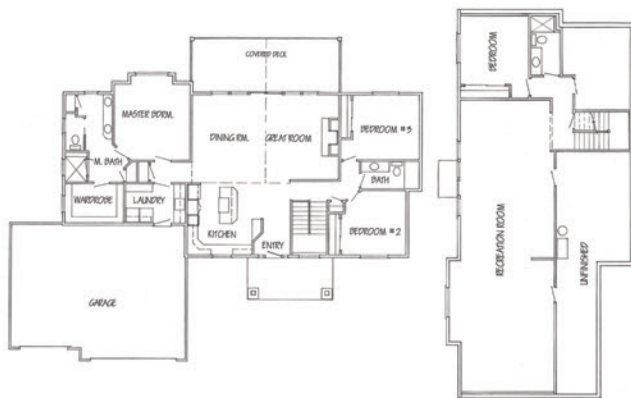
14911 North Country Ridge Lane
SPOKANE

ESTATES AT COUNTRY RIDGE

FEATURES

\$539,000 | 3,811 SF | 4 BED | 3 BATH

- Gated 3 acre homesite
- Tongue and groove covered porches
- Hardwood floors
- Partially Staged



MAIN LEVEL

BASEMENT LEVEL



North on Hwy 395 to Wandermere exit, left on Dartford, left on Hazard, right on Schafer, left on Lynwood. Follow to gated development Estates at Country Ridge. 2nd house on the right through the gate.



Construction Services a Division
of On-Top Realty, Inc.
Nick Barnes
509.777.0008
csspokane.com

Citibrokers LLC
Eva Carper
509.990.5786
eva@evacarper.com

Staging By
509 Designs

SEPTEMBER 23-25 | SEPTEMBER 30-OCTOBER 2



www.SpokaneFestivalOfHomes.com

PRESENTED BY

