



28 NORTH



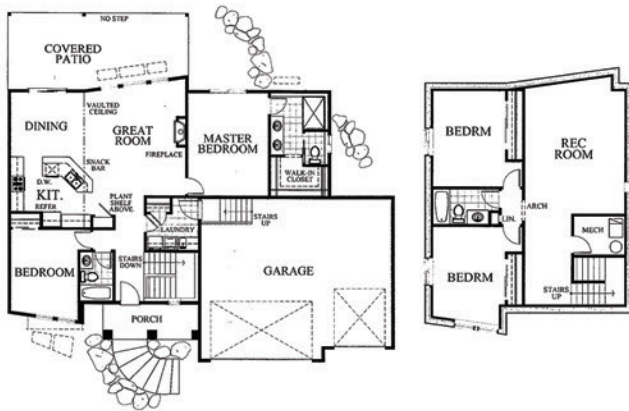
13318 North Mayfair
SPOKANE

WANDERMERE HEIGHTS

FEATURES

\$399,950 | 2,479 SF | 4 BED | 3 BATH

- Gated Community
- Modern contemporary design
- Home is equipped with the latest smart technology
- Partially staged



MAIN LEVEL

LOWER LEVEL



Condon Homes
Corey Condon
509.325.4865
www.condonhomes.com

Windermere City Group
Darren Lawson
509.362.4126
dlawson@windermere.com

Architect
Gallery 12 Designs

Staging By
Reflections of You Interiors



North on Division to Farwell, Left on Farwell, Right on Addison, through the gates, Left on Mayfair

SEPTEMBER 23-25 | SEPTEMBER 30-OCTOBER 2

