



21

VALLEY

SIMILAR HOME

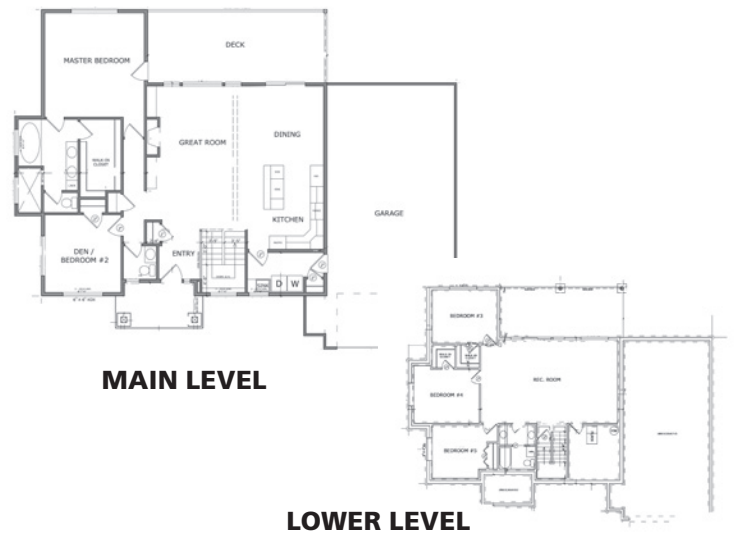


5006 North Hazelwood Terrace Lane
SPOKANE

HAZELWOOD PARK

Paras Homes, LLC
Kurt Paras
509.535.8377
www.parashomes.com

Coldwell Tomlinson
Fred Jakubek
509.879.0506
fajakubek@gmail.com



MAIN LEVEL

LOWER LEVEL

FEATURES

\$489,900 | 3,182 SF | 5 BED | 3 BATH

From I-90, go north on Argonne. Take a left and go west on Upriver Drive. Take a right on Vista. Turn right onto Broad Court. Turn right onto Hazelwood Terrace Lane.

- Modern Prairie exterior design for our Cierra daylight basement rancher.
- Tremendous Hazelwood Park location with private culdesac views.
- 5 bedrooms, tandem 4-car garage, large covered deck and complete yard landscaping.

