



17 VALLEY



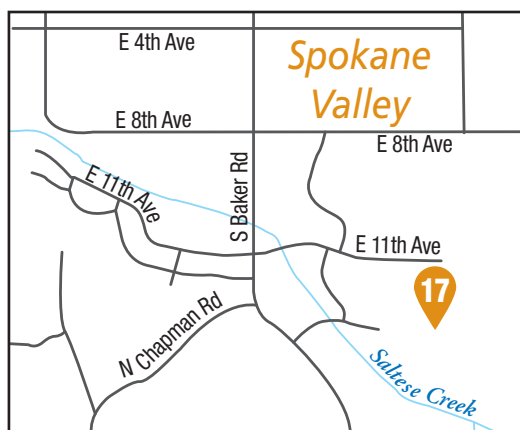
1403 South Hodges Road
SPOKANE VALLEY

TWIN BRIDGES

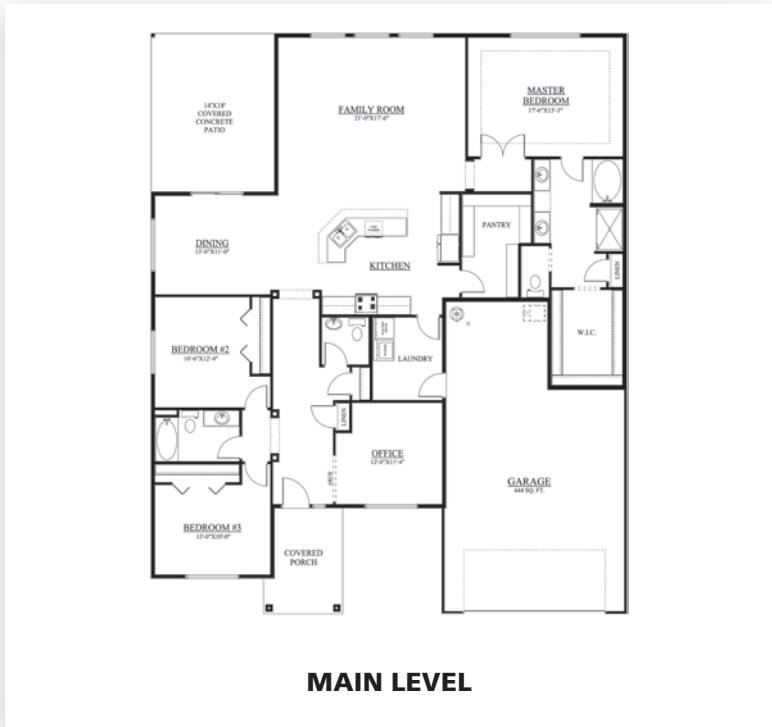
Viking Builders
509.241.3555
www.vikinghomes.com

Windermere
Dawn McKenna
509.951.5011
dawnm@windermere.com

Staging By
Viking Builders



Take the Barker Street exit, and head South from I-90. Turn left on 11th, turn right on Hodges Road, and the home is on the left.



MAIN LEVEL

FEATURES

\$421,827 | 2,384 SF | 3 BED | 2.5 BATH

- Soft close cabinets.
- Quartz kitchen & master bathroom countertops.
- Tiled shower.

