

# 13 VALLEY



PHOTO BY GREENSTONE

## MORNINGSIDE HEIGHTS

17215 East Barclay Drive  
GREENACRES

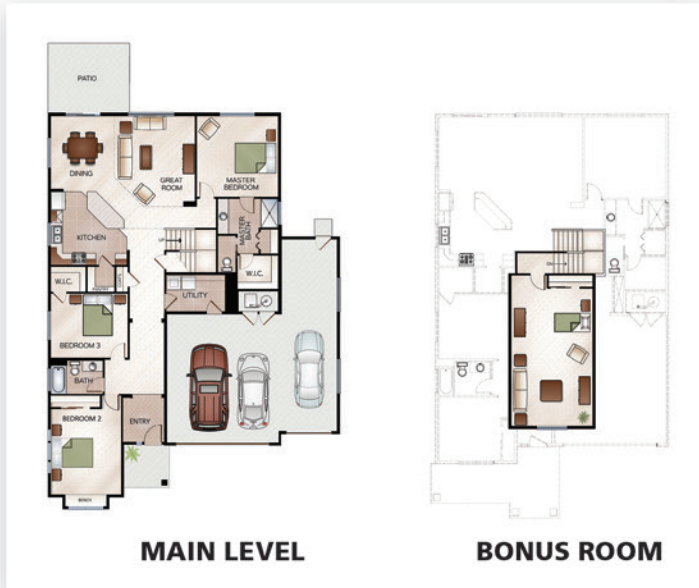
### FEATURES

\$399,900 | 2,369 SF | 4 BED | 3 BATH

- Featuring large windows and vibrant open spaces, this home has beautiful hardwood floors, a gas fireplace with built in bookshelves and spacious bonus room on the upper floor.
- Separate from the two secondary bedrooms, the owner's suite has a walk in closet and a large bathroom with tiled shower.
- This home is the entertainer's dream: kitchen island with quartz countertops, large pantry, open concept with grand vaulted ceilings, and a spacious covered back patio with gas fireplace.
- Fully staged "Kingston EX" home plan



From I-90, take the Sullivan exit 291. Travel south on Sullivan Rd for 2.5 miles and turn left on Saltese Rd. Continue on Saltese for 1 mile and turn left on Chapman Rd. Turn left on Morningside Heights Dr and left again on Barclay Dr. Show home is located on the right.



MAIN LEVEL

BONUS ROOM



Greenstone  
509.458.5860  
greenstonehomes.com  
info@greenstonehomes.com

Keller Williams  
Reid Wilmotte  
509.385.9722  
morningsideheights@  
greenstonehomes.com

Architect  
Greenstone

Staging By  
The Tin Roof