



HOST SITE

# 1 SOUTH



919 South Siena Peak Drive  
SPOKANE

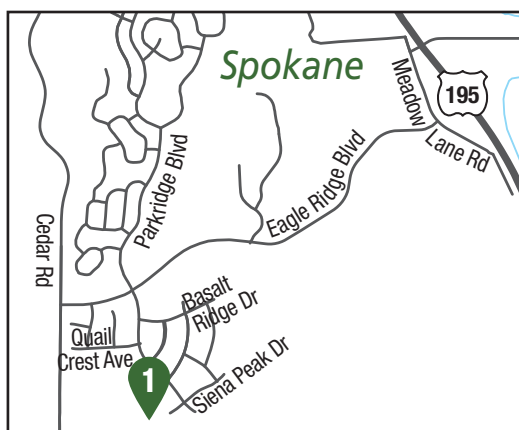
## EAGLE RIDGE

Greenstone  
greenstonehomes.com

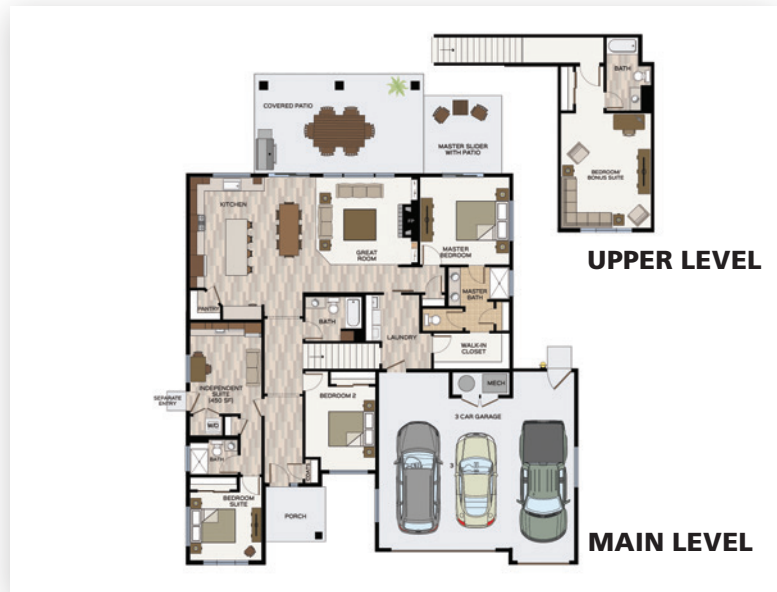
Architect  
Greenstone

Windermere Manito  
Jim Lister  
509.443.2222  
thelisterteam@windermere.com

Staging By  
Tin Roof



From I-90, take Highway 195 South, turn right on Meadow Lane Road, a quick left, then right on Eagle Ridge Boulevard. Turn left on Parkridge Boulevard, right on Siena Peak Drive, and the home is on the left.



### FEATURES

\$394,900 | 2,641 SF | 4 BED | 3.5 BATH

- Introducing the Carson—our new floor plan with a complete “home in a home” independent guest suite. The Carson features open-concept main floor living, dual access master suite, bonus suite upstairs, plus a connected, yet private complete living space that includes a kitchenette, laundry, living/dining, bathroom and bedroom. Perfect for an aging parent or young adult to have their own space!
- Outdoor living abounds with an oversized covered back patio accessible from the great room and a private patio off the master.
- Luxury touches are all over this home with full height exterior stone on the 3 car garage, tiled master shower with bench seat, gas fireplace with stone surround, luxury vinyl plank flooring and quartz countertops throughout.

