

Sq Ft 3,212



**JOHN WRIGHT - 360.856.5285**



Located on one acre on the east side of Buchanan Hill in Clear Lake, this beautiful 3,212 square foot home was designed and built with the environment and our unique northwest Washington lifestyles in mind. The 1,700 square foot wrap-around Trex deck makes outside entertainment possible on even the most drizzly day. The house takes advantage of reverse metering with a wind turbine and solar panel.

Floor coverings were chosen for beauty and sustainability. Quarried and polished Travertine tile covers the floors of the bathrooms, kitchen, entries, laundry room, family room bar and sitting area. Solid 3/4 inch oak flooring covers the remaining floors. These floors should never need replacing and there is no carpet off-gassing to consider.

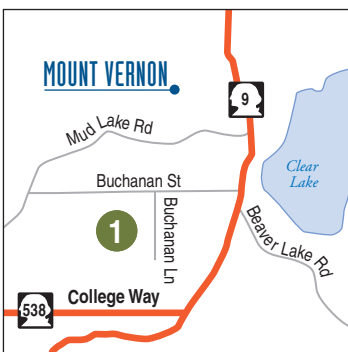
The kitchen has Jenn-air stainless steel appliances, granite slab countertops and maple cabinets. The cabinets offer many special features including a

built in recycling center.

The master suite features a large bathroom and walk-in closet. The bathroom has his and her's vanities with granite countertops, a large soaker tub and a triple headed walk in shower. There is a dedicated tankless hot water heater for the master bath and a separate tankless hot water heater serving the rest of the house.

The second floor family room features a wet bar and has a stunning view of Clear Lake and Beaver Lake with a mountainous backdrop.

This house also features a central vacuum, laundry shoot, propane fireplace with a stone face and exterior propane hook-up for a barbecue.

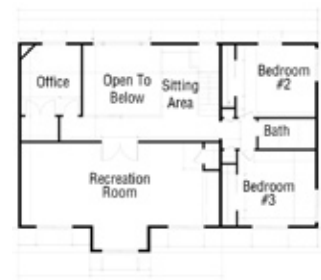


From State Highway 9 at south end of Clear Lake, turn west on Buchanan Street follow to Buchanan Lane. Turn left and follow to first house on the right.

From Interstate Highway 5, take College Way exit. Head east to State Highway 9. Head north to Town of Clear Lake.



**MAIN LEVEL**



**UPPER LEVEL**