

Sq Ft 1,350



JON & JAY ROBERTS - 360.675.0491 - www.cascadecustomhomes.com

This home salutes the simple forms of seaside cottage designs and features. The carefully crafted details are at the heart of the Arts & Crafts style. Stone, tiles, hardwood and color were opportunities to introduce eye-pleasing proportions and details without resorting to ornamentation that would look out of place. Bringing in the beauty of the water and mountain views is a major theme of this home designed by Scott Hampton, designer and built by Cascade Custom Homes & Design, Inc. This home is a Built-Green 3 Star project with the ethic of using a sustainable approach to home building.

Inspired by the simplicity of the form and function of the Arts & Crafts style, the homes' materials and design are a modern version of early 1920's architecture. The openness of the Living Room, Kitchen and Dining Room floors and the dramatic wood gable feeling of the Master Bedroom create the seaside charm of the cottage. The natural colored engineered flooring and the contrasting creamy white built-in cabinetry and trim act as the perfect background for the owner's display of northwest arts and crafts. High transom windows with detailed millwork create a warm and authentic feel that is typical in many Arts & Crafts interiors. Laminate countertops, deep stainless sink, complementing Energy-Star appliances and white paneled beaded cabinets balance the Kitchen's open

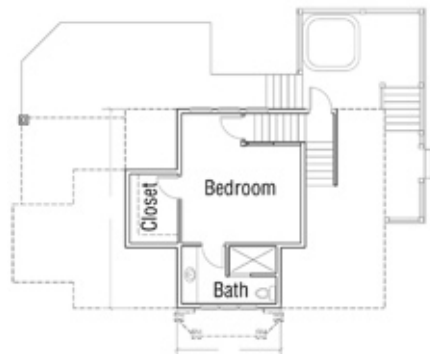
feel. In the Master Suite, simple and romantic touches of a glass vessel sink and crisp natural hemlock craftsman trim exemplify quality in the Arts & Crafts tradition.

The exterior of the home is a combination of low maintenance products with the charm of the Arts & Crafts movement. Hardi shingles together with Hardi panel cement siding and trim work, create the striking contrast that allows the tapered pillars, stone veneer columns and wainscoting to anchor the cottage into the landscaped site. The multi-tier Trex decking, powder coated aluminum and glass deck railings continue the Built-Green philosophy. Milgard vinyl, Low-E windows, Codel fiberglass doors and Pabco Premier architectural roofing finishes out the Heron Bay Cottage.

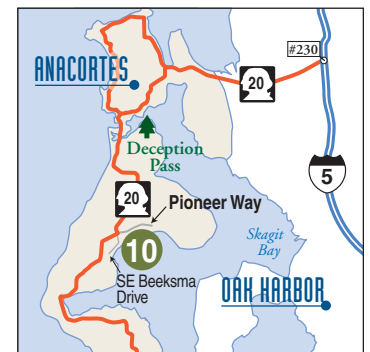
Bringing the project full-circle by building on an in-fill lot allowed for Low Impact Development principles to be used. One such example was collecting all roof and hard surface water and infiltrating it back into the site for aquifer recharge. This home seamlessly promotes energy efficiency, good indoor air quality, water conservation and "green" building materials in a small building footprint - all pieces of the Build-Green process.



MAIN LEVEL



UPPER LEVEL



Take Interstate Highway 5 at exit #230 go west towards Anacortes on State Highway 20. Turn left at Sharp's Corner toward Oak Harbor. Go over Deception Pass into Oak Harbor (stay on State Highway 20), at the end of town at the signal light proceed straight toward water on Southeast Beeksma Drive and the tour home.